

gecotime® - "access control"

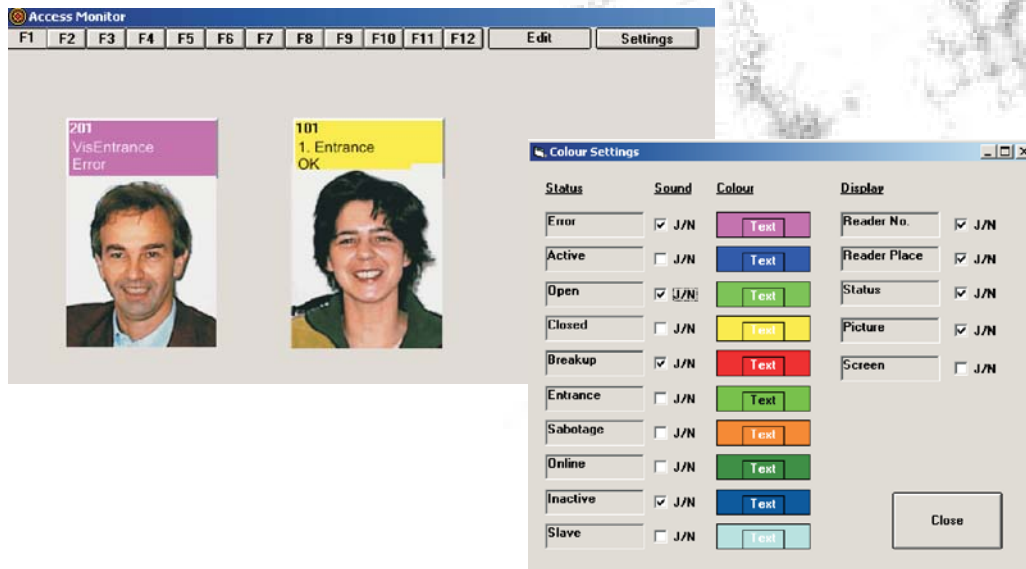
The module access control enables a differentiated monitoring of doors, gates, separation installations and more.

Depending on the security demand of the single areas, different verify criterions for access authorizations can be gives to the single readers.

A visitors administration is integrated, where the relevant data can be hold.



The modul GeCOTime® - Access Monitor enables additional permanent monitoring of the door states with the display of photos from the employee or visitor who accuated the access reader at last.



Summarized performance-scope

Employee- and visitors - administration:

- Access authorization definations can be defined unlimited
- additional pincode inquiry possible

Supplement of access informations at the terminal by time driven mail-texts.

Date -limitation of the general access authorizations in employee- or visitor master data.

Assignment of a foto to the employee.

Authorization definations:

- Assignment of time and area authorizations
- Reader authorization can be given individual

Time class administration:

- includes daytime-, week- and holiday-authorizations
- more data depending on the used terminal possible, e.g.:
 - "permanent open"
 - access('only') with pincode
 - 'only' exit/entrance

Area administration:

- summarizes access readers (marked as entrance- or exit reader) to areas
- It can be reproduced permanently, which employee 'stayed in this area at what time', e.g., is there at the moment.

Access controll:

- "online" or "offline" possible

Display and printing:

- realized admissions und unauthorised access with the corresponding status.
- area - occupancy
- employee - reader -assignment

Presented by: